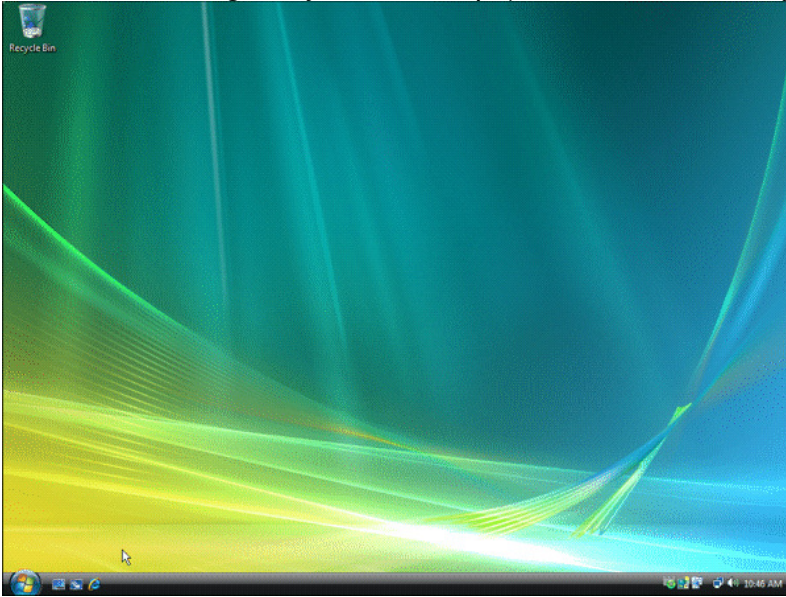

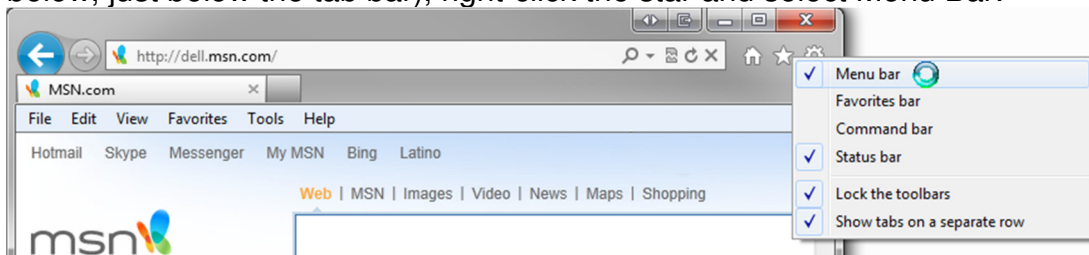


# Authorware Install Directions for IE in Windows Vista, Windows 7, and Windows 8

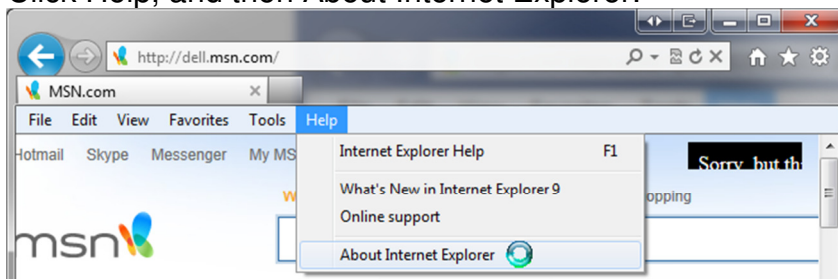
1. Read entire document before continuing.
2. Close all browser windows. There should be no websites open. If you are using Windows 8, go to your Desktop (Authorware will only run in Desktop mode).



3. Open Internet Explorer (Click on ). If you are using a 64-bit machine, confirm that you are using the 32-bit edition of Internet Explorer (Authorware will not run correctly in the 64-bit edition).
  - a. If you do not see a menu bar (File Edit View Favorites Tools Help, shown below, just below the tab bar), right-click the star and select Menu Bar:



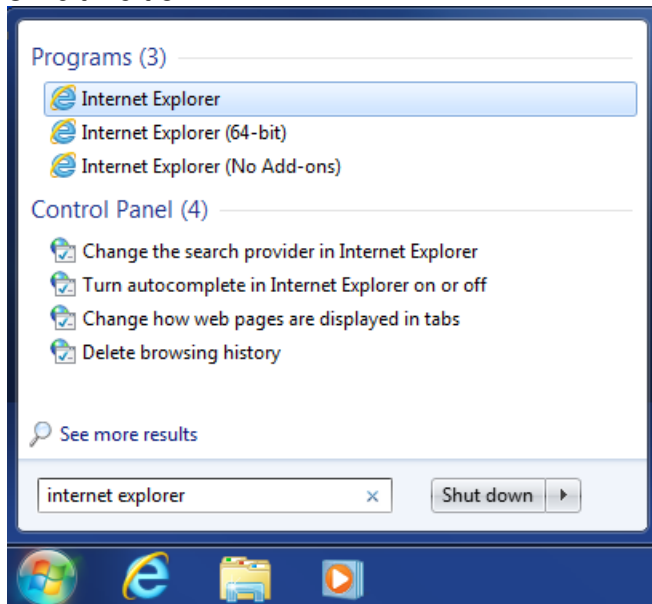
- b. Click Help, and then About Internet Explorer:



- c. Look for 64-bit Edition on the Version line, as shown below:

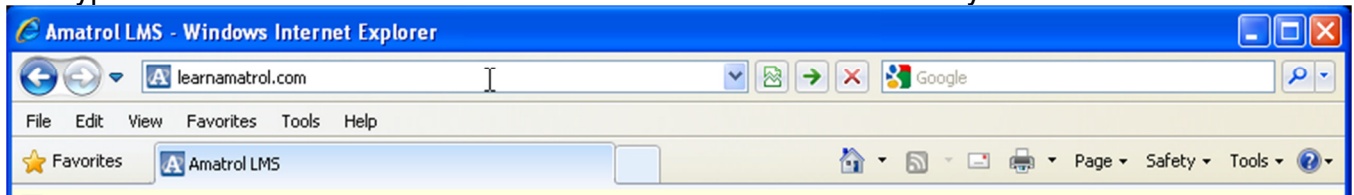


- d. If you do not see 64-bit Edition, continue to step 4. If you do see 64-bit Edition, as shown above, click Start and type Internet Explorer to look for the 32-bit Edition:

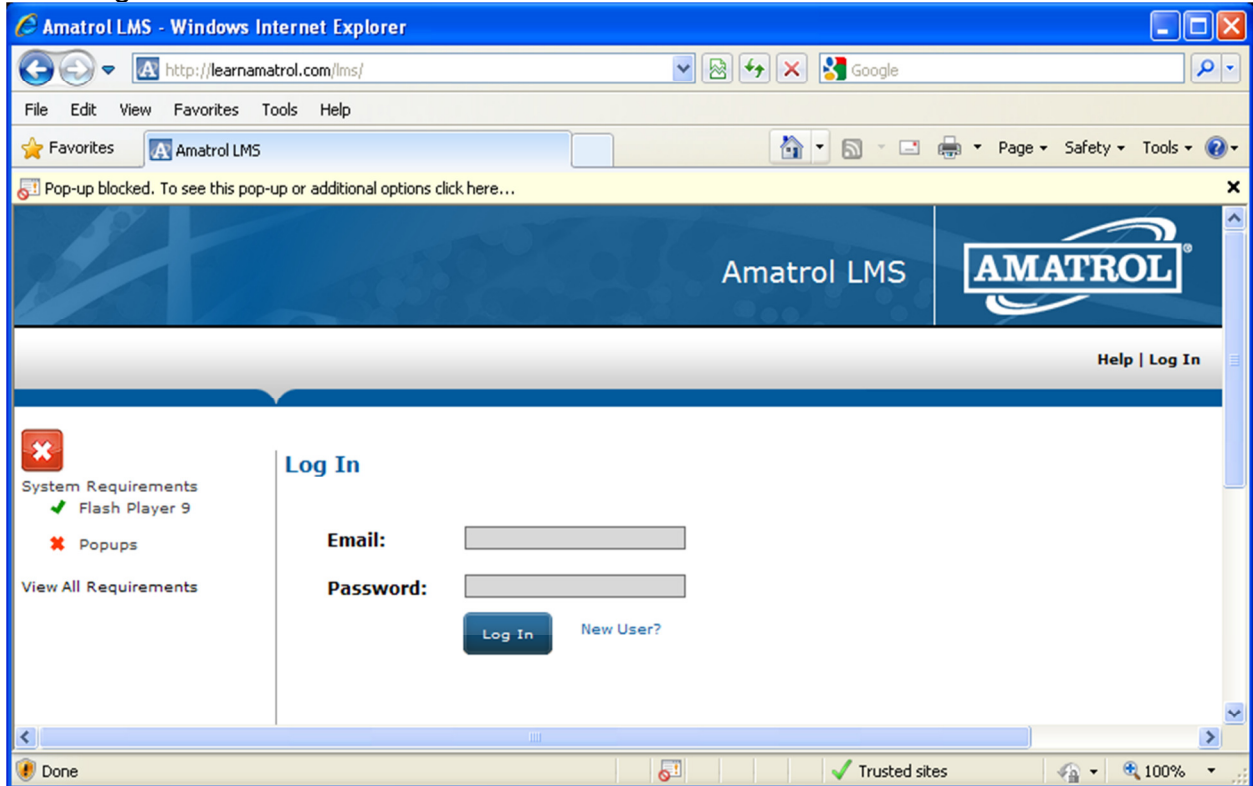


- e. You will either have one that says "Internet Explorer (32-bit)" or one that does **not** say "Internet Explorer (64-bit)", as shown above.

4. Type **learnamatrol.com** in the address bar and hit the 'Enter' key.

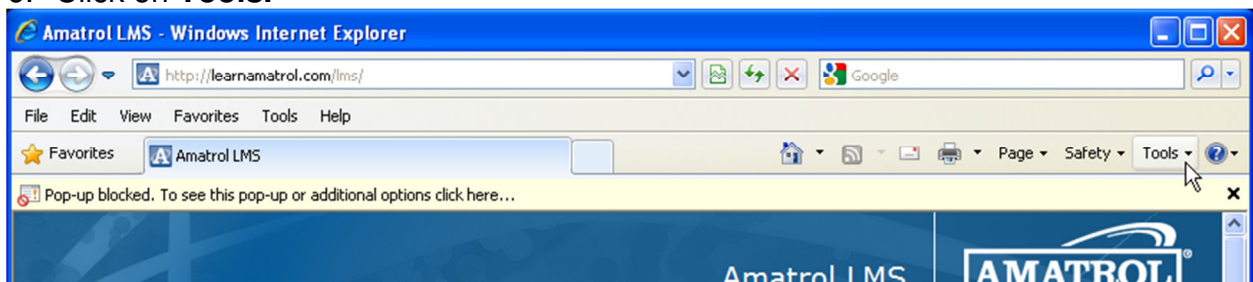


When you have successfully navigated to the correct page, it will look similar to the following:



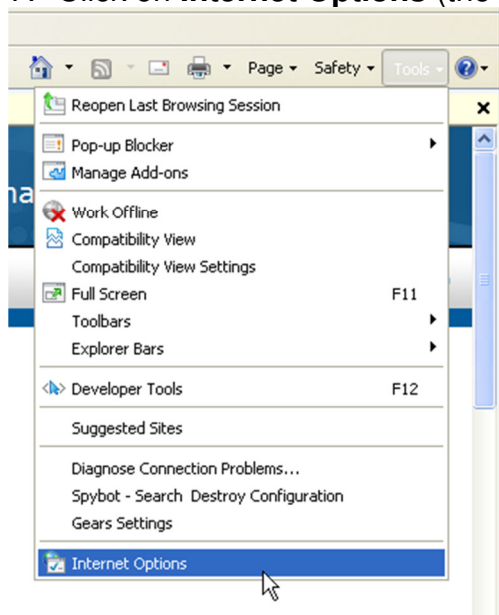
5. If you do not see a menu bar (File Edit View Favorites Tools Help), refer to step 3.a above.

6. Click on **Tools**.

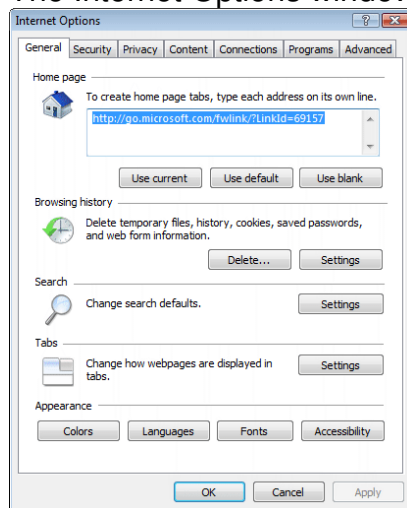


A menu will open.

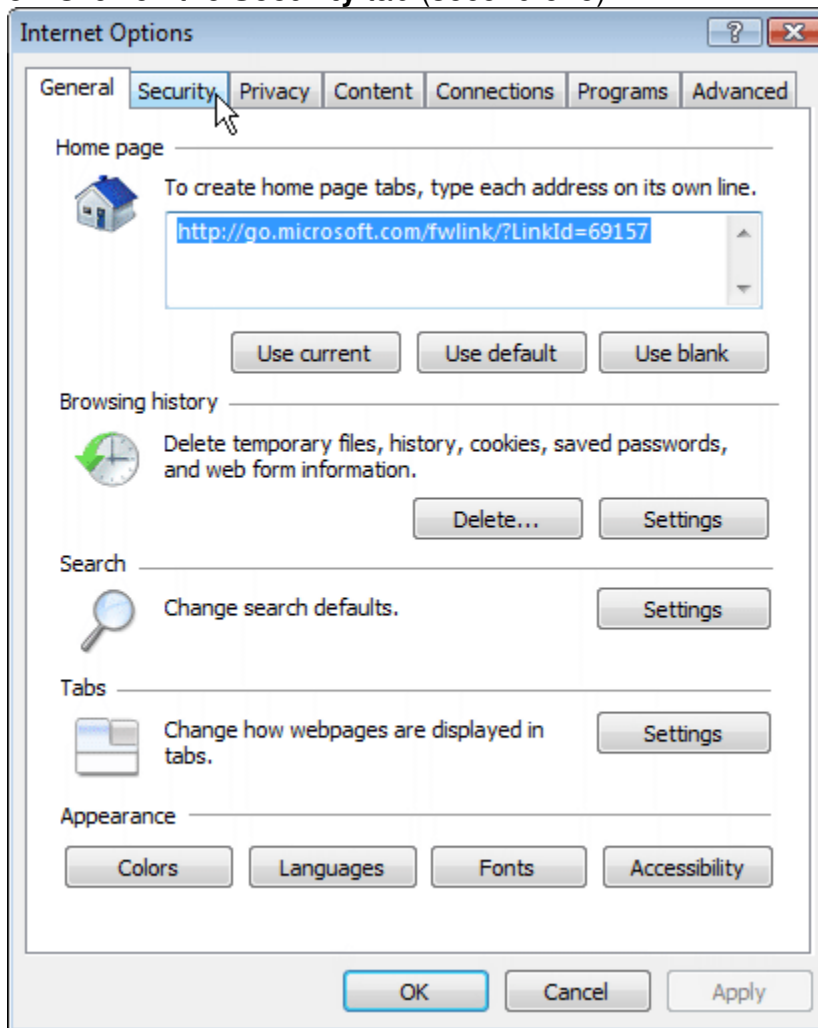
7. Click on **Internet Options** (the last menu item).



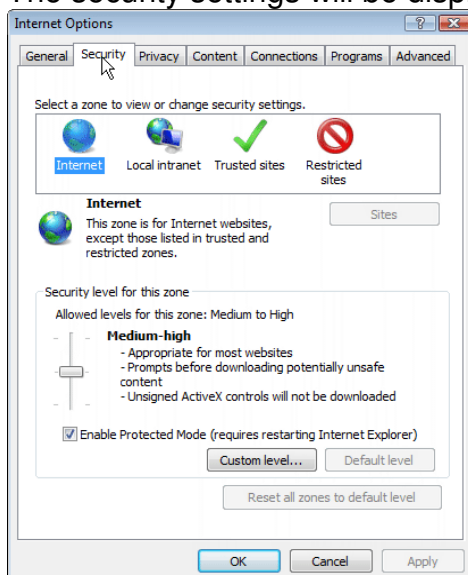
The Internet Options window will open.



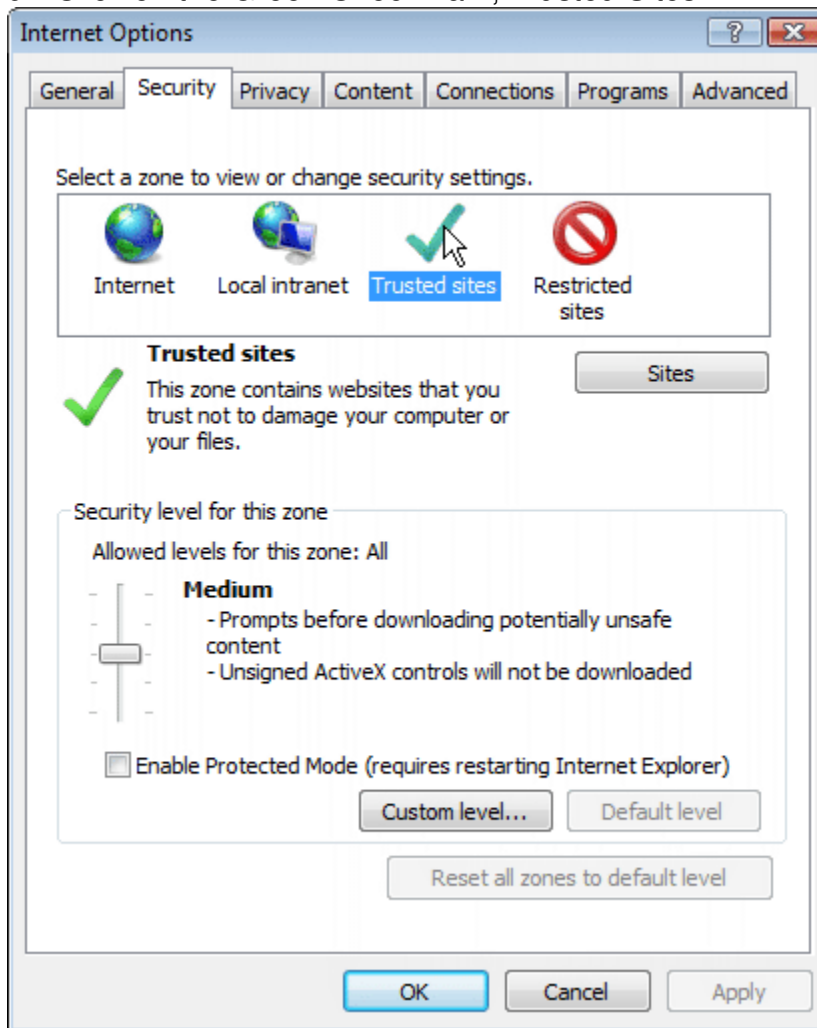
8. Click on the **Security** tab (second one).



The security settings will be displayed:

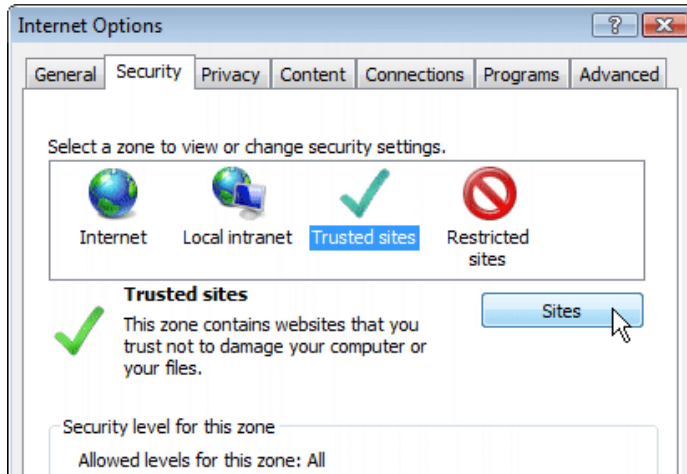


9. Click on the Green Checkmark, Trusted Sites.



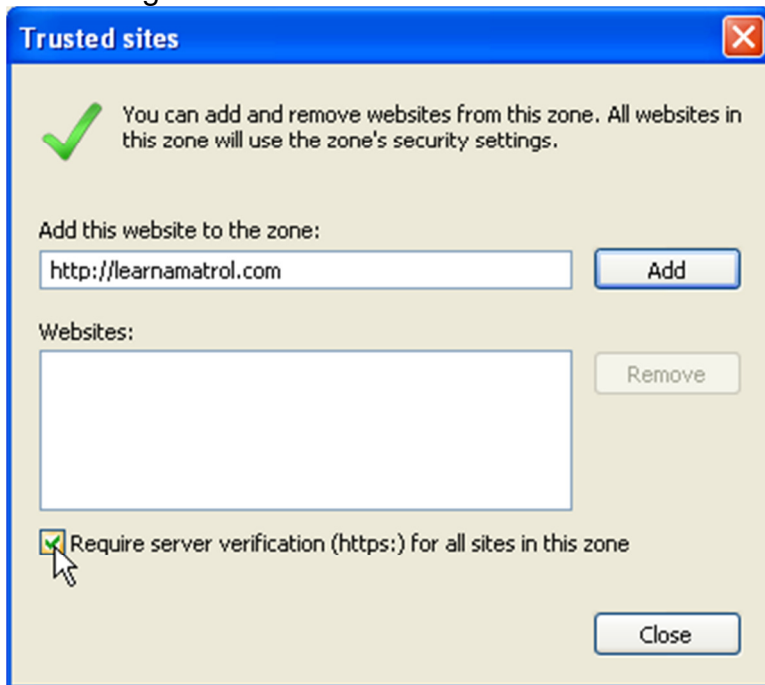
Confirm that there is NOT a checkmark next to 'Enable Protected Mode' near the bottom of the Internet Options window. If there is a checkmark REMOVE it by clicking it.

10. Click on the **Sites** button below the box that has the green checkmark.

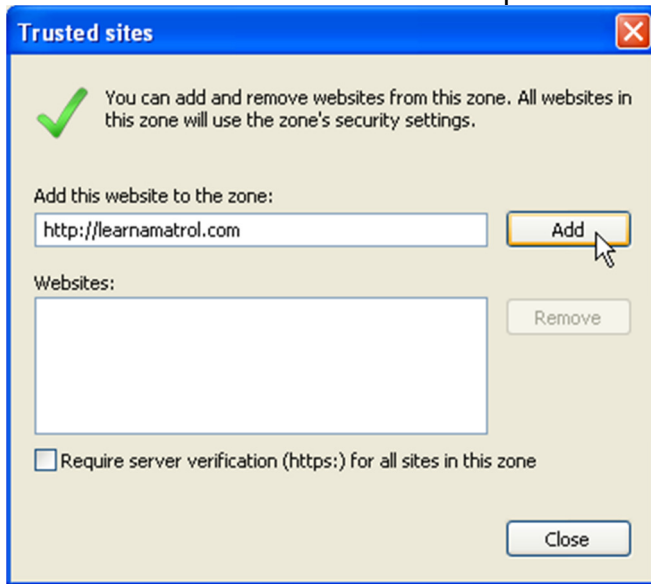


A dialog box will open.

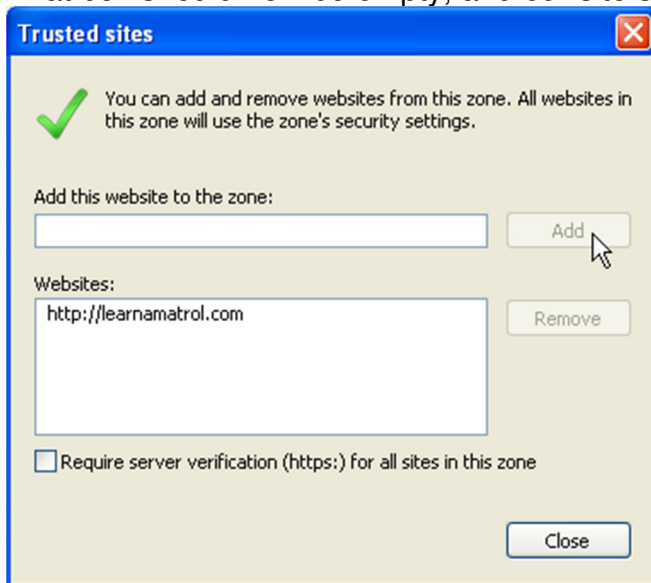
11. REMOVE the checkmark near the bottom next to "Require server verification..." by clicking it.



12. Click the Add button near the top.

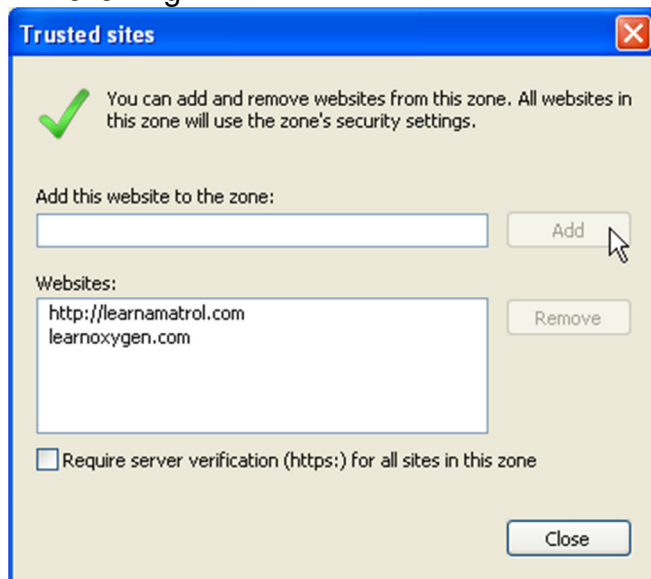


That box should now be empty, and our site should be in the Websites box:

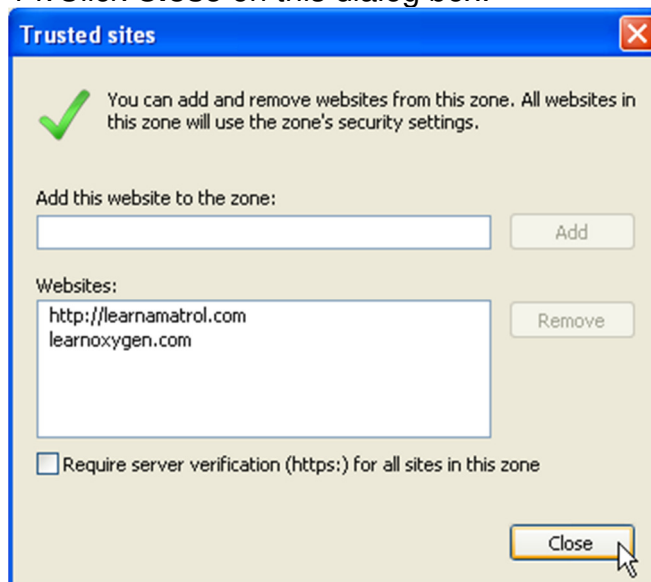




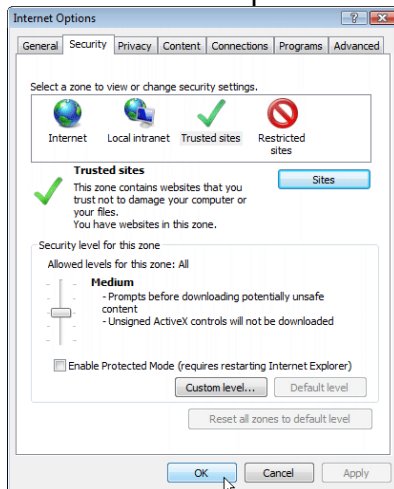
13. If you log in through [learnoxxygen.com](http://learnoxxygen.com), type **learnoxxygen.com** in the 'Add this website to the zone:' box and click the Add button. It should now look similar to the following:



14. Click **Close** on this dialog box:



## OK on Internet Options



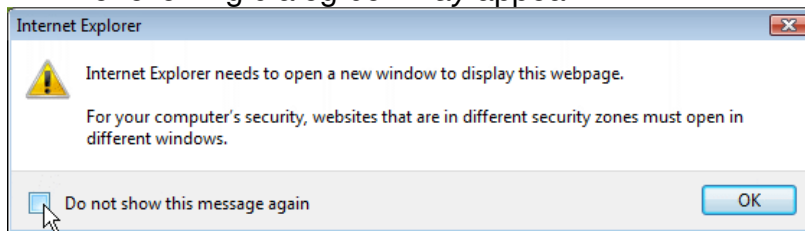
Then close the browser.

15. Open Internet Explorer (Click on ).

16. Type **learnamatrol.com** in the address bar and hit the 'Enter' key.

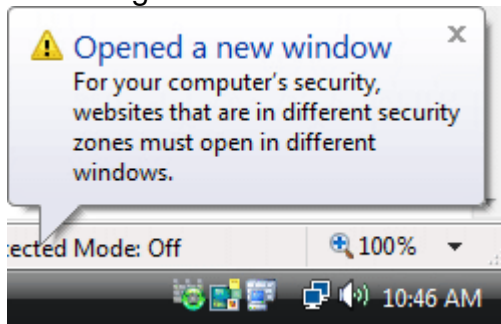


17. The following dialog box *may* appear:



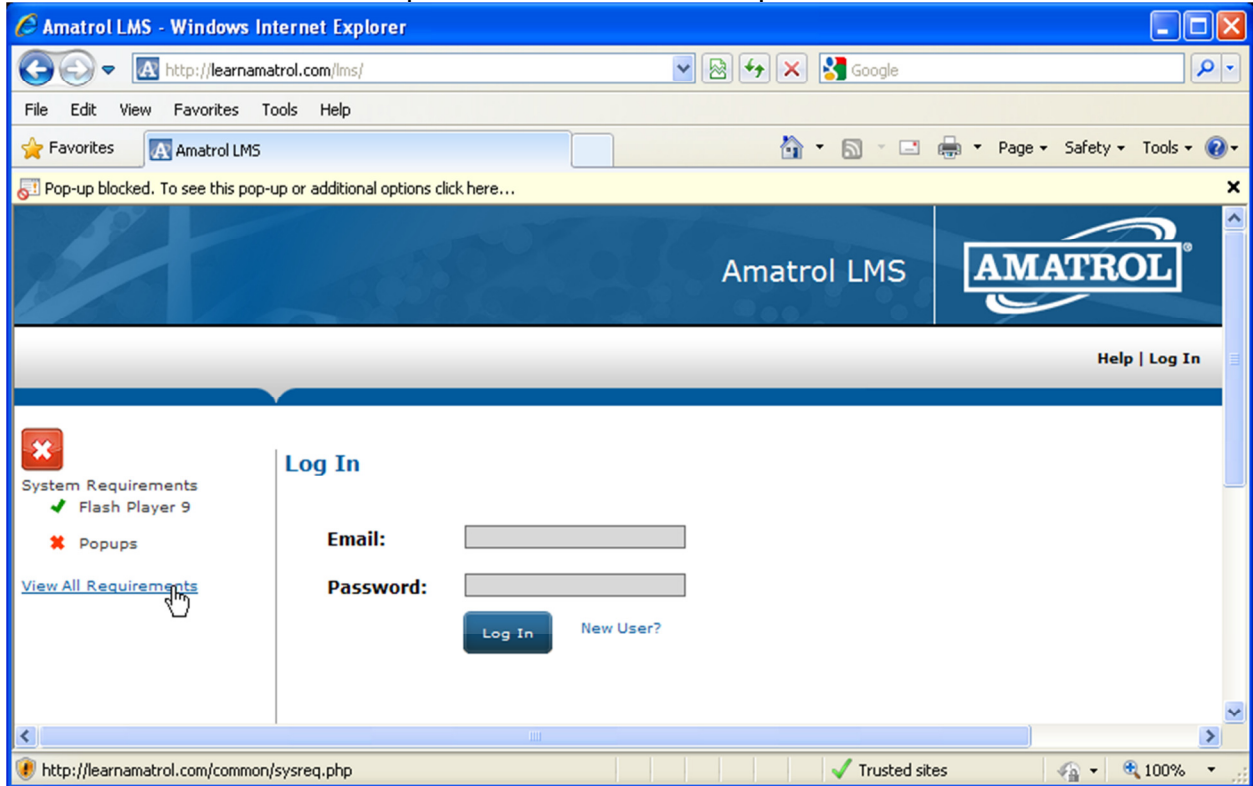
Click the check box next to “Do not show this message again” to prevent this dialog box from being shown each time you navigate to your login page.

Click **OK** to continue loading the page. The following message may be displayed in the bottom right corner:

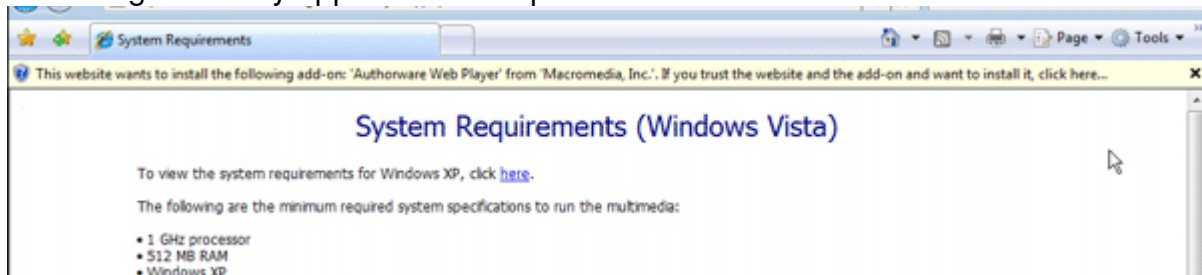


This can be ignored.

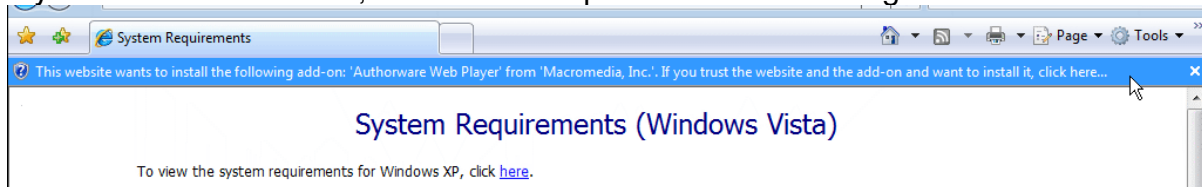
18. Click on the View All Requirements link in the left panel.



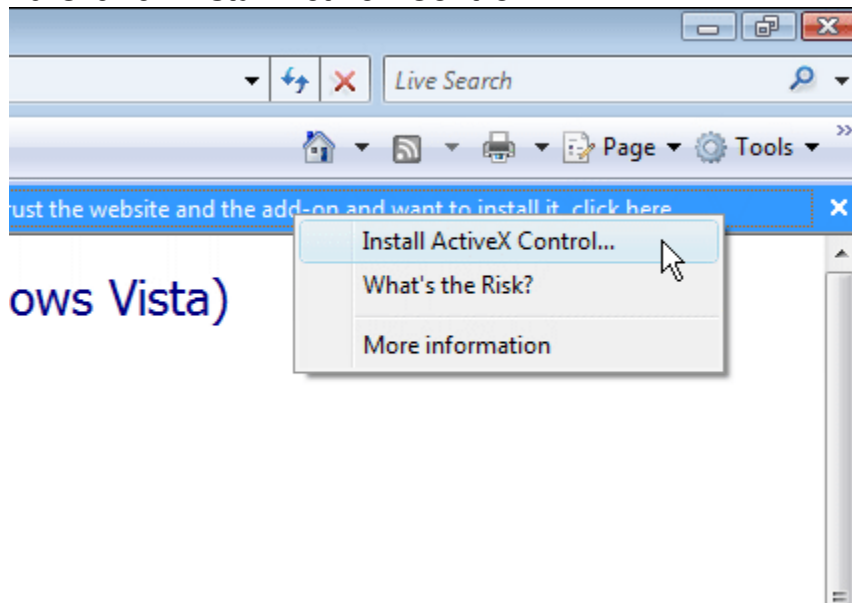
19. A beige bar may appear on the top of the browser window:



If you do not see this bar, continue to step 21. Click on the beige bar:



20. Click on **Install ActiveX Control...**

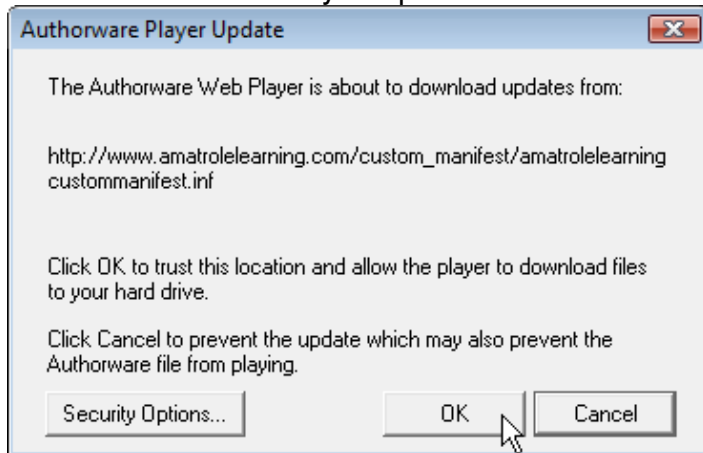


21. A dialog box may pop up:



If you do not see this dialog box, continue to step 22. Click the **Install** button.

22. An Authorware Player Update or Authorware Web Player Security dialog will pop up:



Click **OK** to allow Authorware to run. You may see this or a similar dialog multiple times. Each time, click **OK** to allow Authorware to install and configure properly.

Authorware will load:



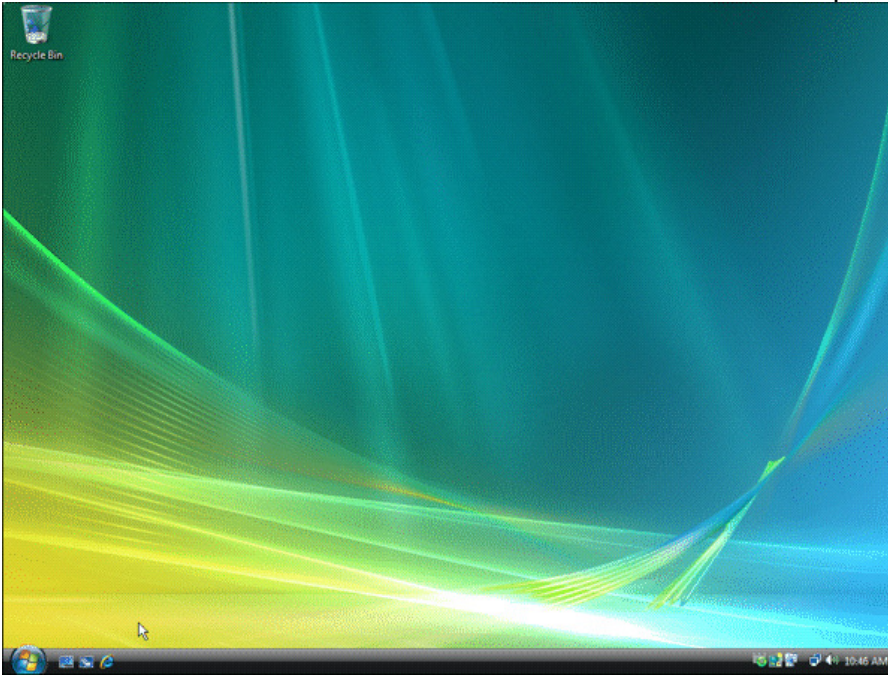
Then play:



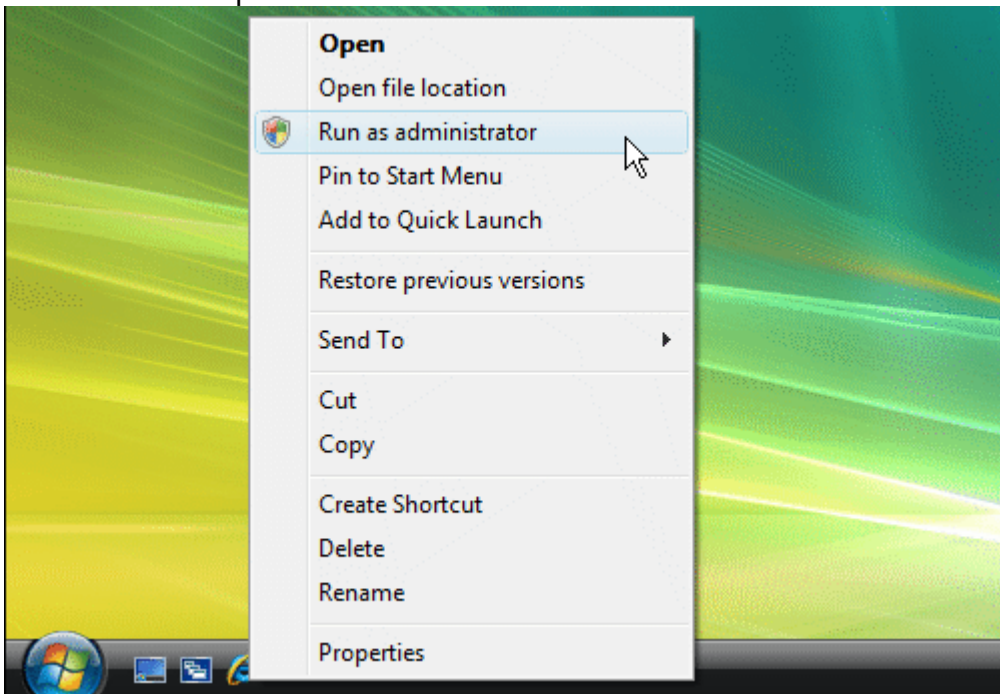
Setup and configuration is complete. You should be able to log in and run content.

On *SOME* versions of Vista, you must start Internet Explorer with Administrator's rights to install Internet Explorer plug-ins such as Authorware. If you follow the steps above and cannot get Authorware to install, perform the steps below.

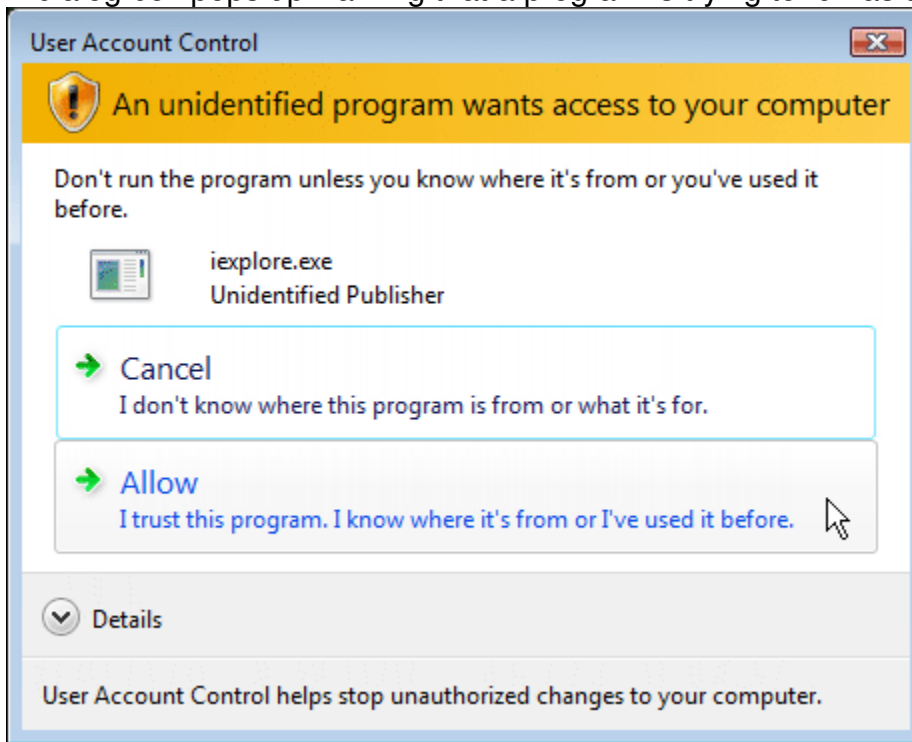
A. Close all browser windows. There should be no websites open.



B. Right-click the Internet Explorer icon (🌐); a menu should appear. Click the **Run as administrator** option.



C. A dialog box pops up warning that a program is trying to run as admin. Click **Allow**:



D. Perform the numbered steps above starting at step 4.